

SECTION NAME

成员中文名

Bezalel Academy of Arts and Design Jerusalem

Introduction

Founded in 1906, Bezalel Academy of Arts and Design Jerusalem is Israel's leading institution for art, design, and architecture. For over a century, it has shaped the country's cultural landscape, fostering creativity, tolerance, and freedom of expression. Bezalel is committed to educating artists and designers with both technical skills and values of responsible citizenship. Renowned for excellence, it inspires original thought and human-centered approaches, encouraging students and faculty to expand cultural horizons, promote multi-culturism and challenge conventional beliefs through innovative, socially engaged art and design.



Jack, Joseph and Morton Mandel Bezalel Campus. Photo: Rotem Roseman Yeffet

Bezalel offers undergraduate and graduate degrees in 15 programs:

Academic Programs

Undergraduate

- Architecture
- Landscape Architecture
- Ceramics and Glass Design
- Fine Arts
- Industrial Design
- Jewelry and Fashion
- Photography
- Screen-based Arts
- Visual Communication
- Visual and Material Culture

Graduate

- Fine Arts (M.F.A.)
- Industrial Design (M.Des.)
- Policy and Theory of the Arts (M.A.)
- Urban Design (M.Urb.Des.)
- Visual Communication (M.Des.)

Additional Programs

- Student Exchange (Incoming)
- Teaching Certificate
- Innovation Centers
- Continuing Education
- Preparatory Program for Entry Exams
- Haredi Branch

Teaching, Research and Innovation in Bezalel

The Art and Design Teaching Center

The Art and Design Teaching Center fosters innovative, reflective teaching, advancing creative, knowledge-based practices through collaborations with Israeli and international institutions to enhance learning and development. It addresses a wide range of student and faculty cultural diversities requiring a holistic, multidisciplinary, creative and open approach. The Center focuses on teaching development, management, and research, supporting innovation, evaluation, and new educational practices at Bezalel.

Research and Innovation Authority

Viewed through the critical lens of artists and designers, practice-based research at Bezalel is human-centered and interdisciplinary, emphasizing new cultural ideas, from human rights to the social aspects of technology or new political opportunities enabled by digital diplomacy.

New Technologies at Bezalel

Advanced technologies and sophisticated tools are being used to further art and design, building on crafts and traditional techniques by exploring new paths of self-expression, new concepts of esthetics and new forms of communication. Students and faculty are encouraged to work closely with scientists, engineers, cognitive researchers, AI experts, clinicians and social thinkers in domains such as healthcare, assistive technologies, the implication of climate change, human augmentation and the nature of artistic creation.

Bezalel Institute for Spatial Studies

The Bezalel Institute for Spatial Studies is an incubator for the development of current research in the fields of architecture, urbanism, landscape and the environment. It comprises the Urban Lab with national and EU research funding.

Sustainable Development Hub

The Sustainable Development Hub at Bezalel promotes environmental-conscious design by integrating ecological, social, and cultural considerations. Through research, education, and partnerships, it embeds sustainability in Bezalel's activities, supporting its Green Campus status and addressing climate change with responsible, innovative design practices.



BISS researchers presenting in the Faro 2024 Conference, Porto, Portugal. Photo: Emeline Lin



Research by design for developing soft architecture, SOFT Lab



Hands-on experience. Photo: Adi Sela Wiener



SECTION NAME

成员中文名

Bezalel Academy of Arts and Design Jerusalem

School of Architecture

The School of Architecture fosters a vibrant community of students and offering a professional 5-year **Bachelor's degree in Architecture (B.Arch)**, a **Bachelor's degree in Landscape Architecture (B.L.A.)** and a post-professional **Master's degree in Urban Design (M.UrbDes)**. The programs encourage interdisciplinary learning, combining theory and practice while promoting collaboration across fields addressing key social and environmental issues.



Master's Program in Urban Design (M.Urb.Des.)

Located on Bezalel's historic Jerusalem campus, the Urban Design program, with two unique tracks, provides an exceptional setting for exploring the relationships between built spaces, communities, and historical and contemporary urban layers, preparing graduates with diverse skills and perspectives to shape future environments responsibly and creatively with the city of Jerusalem as a living laboratory.

Conservation and Heritage Track

The Conservation and Heritage track explores the growing role of conservation as a key element in urban design and planning. Adopting a critical approach, it examines the significance of cultural heritage within dynamic urban spaces, especially amid urban renewal processes. These challenges demand policies and diverse tools, including community engagement, regulatory frameworks, financial strategies, and design knowledge.

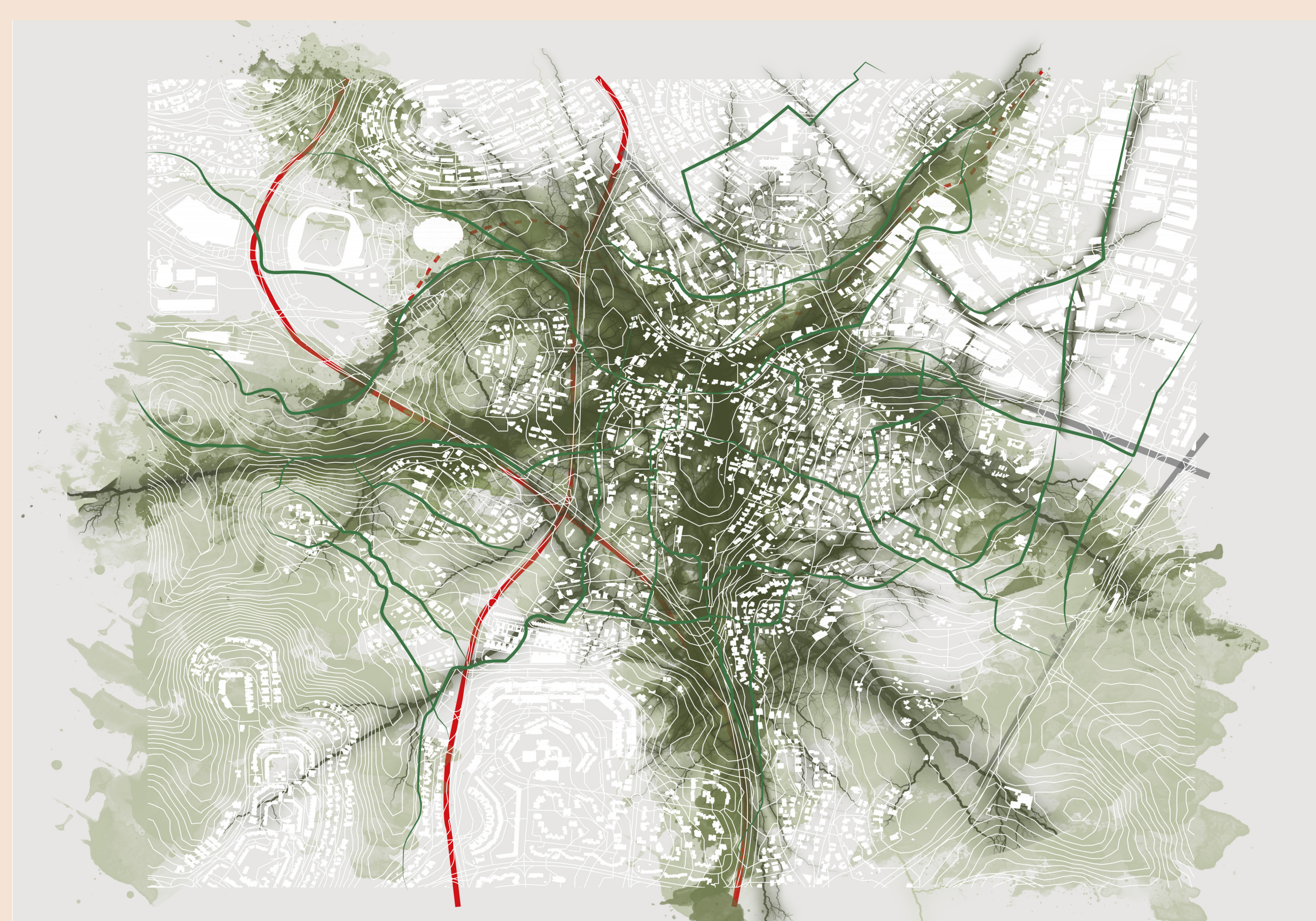
Urban heritage, both tangible and intangible, reflects past and present human diversities, fostering social cohesion and resilience. The program views heritage as layered cultural and natural values that extend beyond traditional "historic centers," integrating broader urban and geographic contexts. Graduates gain the multi-disciplinary skills in conservation enabling sustainable development.



Chronicle of an ongoing destruction and building within historic cities. The case study of Tiberias. Ori Raibi

City and Landscape Track

The 21st-century city requires understanding beyond its built space, emphasizing "landscape" as urban, ecological, and social infrastructure. The City and Landscape track equips students with critical tools to plan open spaces, addressing climate change and extremes, restoration, biodiversity, and sustainable design in Israel and globally.



Indigenous urbanism as an act of resilience in an occupied city. The case of Beit Safafa. Nadine Akel

UNESCO Chair in Urban Design and Conservation Studies at Bezalel Academy of Arts and Design Jerusalem

The UNESCO Chair at Bezalel is celebrating two decades of activities. In the field of urban design, the Chair has been a major international protagonist for the Historic Urban Landscape approach participating in major events and expert meetings. At the local level, the Chair supports the Conservation track in the Urban Design Graduate Program generating research activities at home and abroad.

Leading and promoting theoretical and applied research across the spectrum of art, architecture and design the Chair has been a catalyst for interactions with other fields and in supporting activities for regional peace and dialogue. The Chair over the past years has partnered MoHoA, the Modern Heritage of Africa initiative and the UN-Habitat Heritopolis partnership for Heritage and the Metropolis.



UNESCO - Third Cycle of Periodic Reporting, preparation day Migdal Tzedek National Park, Jan. 2023. Photo: Adi Sela Wiener



UNESCO - Third Cycle of Periodic Reporting, consultation workshop with States Parties, UNESCO Headquarters Paris, Dec. 2023. Photo: World Heritage Centre

